

Multi-Lock Hinge Operation

WARNING: To avoid serious injury from platform collapse:

- Hinges must be in the LOCKED position using platform.
- Never force hinge locks in or out with any tools as it will cause permanent damage. Only light application of pressure is needed to unlock hinges when holes are properly aligned.

Hinge Lock Operation:

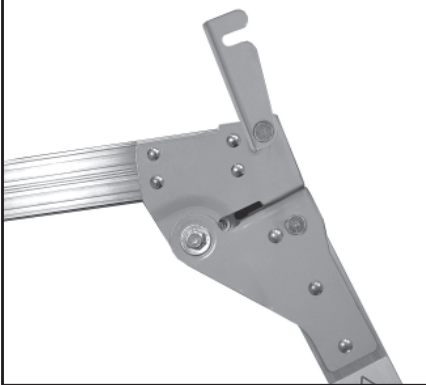
To UNLOCK Hinge: Pull the security hook anti-clockwise until released.

To LOCK Hinge: Pull the security hook clockwise until the hinge is locked.

Locked Position



Unlocked Position (unsafe)



Step Up Platform

- Use the Step Up platform only in the configuration shown below. Never use in any other configuration.
- Always check platform hinges making sure all hinges are in the LOCKED position before climbing platform.
- NEVER straddle front and rear sections



PLEASE RETAIN THESE INSTRUCTIONS FOR FUTURE REFERENCE

FAITHFULL TOOLS
Long Reach, Galleon Boulevard,
Crossways Business Park, Dartford,
Kent, DA2 6QE, United Kingdom
E-mail: enquiries@faithfulltools.com
www.fairfulltools.com



FOLD AWAY STEP UP

**MAX
load limit
150kg**



The Aluminium 'Step Up' Work Platform

FAI STEPUP2

USER INSTRUCTIONS

Important Safety Information for using the Faithfull Step Up

READ AND FOLLOW ALL SET UP AND INSTRUCTIONS FOR USE BEFORE USING YOUR STEP UP. USE ONLY AS DIRECTED

Warning: To avoid serious injury, read all instructions and safety information on the on-product labels and in this manual before using this 'Step Up'.

- **MAXIMUM WEIGHT CAPACITY:** The weight of user plus tools and materials should not exceed 150kg.
- **ALWAYS** check all the hinge locking mechanisms. Make sure the hinges are in the locked position before using.
- **ALWAYS** inspect all parts prior to each use. Discontinue use if any part of the Step Up is missing, damaged or worn in any way.
- **ALWAYS** place the Step Up on an even, firm, dry surface for stability. Never try to increase the height of the Step Up in any way, by placing anything under the legs or by placing items on the flat platform surface to increase your working height.
- **ALWAYS** place the Step Up in the correct position for the work being carried out. **NEVER OVERREACH** while working on the platform. Keep your body in the center between side rails to avoid losing your balance or tipping the Step Up over.
- **ALWAYS** use extreme caution when using the Step Up on a rug, carpet or other protective surface covering. This will prevent the rubber feet from gripping the surface properly.
- **ALWAYS** mount the platform from the side using the step provided, keeping a secure grip on the platform when ascending and descending. Never step from side to side on to another platform.
- **ALWAYS** use extreme caution when using the Step Up in windy, wet or icy conditions
- **NEVER** use any other attachments, components or accessories unless recommended for use with this Step Up.
- **NEVER** attempt to fix a damaged Step Up. Repairs should always be carried out by a qualified person.
- **NEVER** use the Step Up while under the influence of alcohol or drugs of any kind. Always be in good physical condition when using this Step Up.
- **NEVER** set up the Step Up in front of doors that are not locked.
- **NEVER** operate the Step Up on a slippery surface.
- **NEVER** attempt to close the Step Up legs until the hinge locking mechanism is completely unlocked.
- **NEVER** force the lever of the locking mechanism. If this should become stuck, lift that section lightly to remove the weight from the hinge. Then attempt to lift the lever again.
- **NEVER** Push or pull anything while on the Step Up, this may cause the platform to tip causing you to fall. Use extreme caution if you must push or pull anything when on the Step Up.
- **NEVER** attempt to jump, push along or move the Step Up while you are on it. If you need to move the Step Up, get off it first, move it, then reposition yourself
- **NEVER** attempt use the Step Up as a bridge or as a brace in any way
- **NEVER** place yourself or allow anyone to work under the Step Up while in use.
- **NEVER** leave the Step Up set up unattended near children or allow children to play with this product.
- **NEVER** stand on the Step Up while releasing the locking mechanism.
- **NEVER** force the hinge or the locking mechanism. This could cause serious personal injury and/or damage the Step Up and void the warranty.
- **NEVER** use on stairways or stepped surfaces. This could cause the platform to tip causing you to lose your balance.
- **TO AVOID** pinching injuries take care when folding or opening the Step Up sections. Keep all body parts away from the hinges and moving sections of the Step Up.
- **TO AVOID** slipping or sliding keep the Step Up dry, clean and free of debris and wear slip resistant shoes

Before Use

- Ensure that you are fit enough to use a Step Up. Certain medical conditions, medication, alcohol or drug abuse could make Step Up use unsafe.
- Inspect the Step Up after delivery and before first use to confirm its condition and operation of all its parts.
- Visually check the Step Up is not damaged and is safe to use at the start of each working day, when the Step Up is to be used.
- For professional users regular periodic inspections and maintenance are required.
- Ensure the Step Up is suitable for the task in hand.
- Under no circumstances should a damaged Step Up be used.
- Remove any contamination from the Step Up, such as wet paint, mud, oil or snow.
- Before using a Step Up at work, a risk assessment should be carried out in accordance to the legislation in the country of use.

Positioning and Erecting the Platform

- The locking devices must be fully locked and secure before use.
- The Step Up must be placed on a stable, even, firm and dry surface prior to use.
- The Step Up must not be positioned on a slippery surface (such as ice, shiny surfaces or significantly contaminated solid surfaces) unless additional effective measures are taken to prevent the platform from slipping, by ensuring that any contaminated surfaces have been sufficiently cleaned prior to use.
- The Step Up must be stood on its feet on a firm surface and not on rungs or steps or any other equipment.
- The Step Up must never be repositioned from above. If you need to move the Step Up, get off it, move it, then reposition yourself

- When positioning the Step Up, take into account the risk of collision with the Step Up e.g. from pedestrians, vehicles or doors. Secure doors (**not fire exits**) and windows where possible in the work area.
- WARNING METAL CONDUCTS ELECTRICITY** do not let the Step Up come into contact with live electrical wires. Identify any electrical risks in the work area, such as overhead lines or other exposed electrical equipment.

Using the Platform

- Do not spend long periods on a platform without taking regular breaks (tiredness is a risk).
- Maintain a handhold whilst working from a platform or take additional safety precautions if you cannot.

Storage

- Store the Step Up in a safe and dry place.
- Lubricate the mechanism of hinges regularly.
- Properly secure and support the Step Up while in transit.

Inspection and Care

- Always check all hinge locking mechanisms. Make sure all of the 'Step Up' hinges are in the locked position before using. Using the platform with an unlocked hinge could result in serious injury or death.
- Inspect all parts prior to each use. Do not use if any part of the platform is missing, damaged or worn in any way.
- Do not expose the 'Step Up' to excessive heat) or corrosive agents such as acids or alkalis.
- Always clean the 'Step Up' after each use.
- Check all moving parts regularly and lightly lubricate with a household oil if necessary. Never allow lubricant to reach the rungs or side rails.