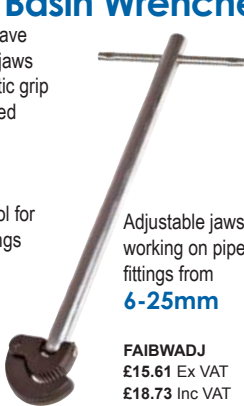


Adjustable Basin Wrenches

These basin wrenches have adjustable spring action jaws that maintain an automatic grip on pipe fittings. The forged steel jaws turn 180° for greater flexibility.

They are an essential tool for use on compression fittings on basins and baths.



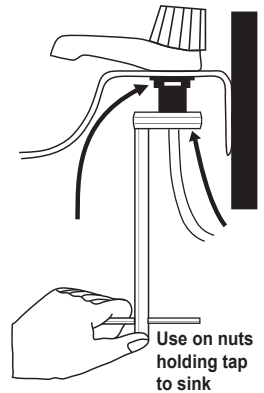
Adjustable jaws for working on pipe fittings from **6-25mm**

FA15WADJ
£15.61 Ex VAT
£18.73 Inc VAT



Bath wrench with a larger jaw for pipe fittings from **25-50mm**

FA17WADJL
£17.63 Ex VAT
£21.16 Inc VAT



BW1 Basin Wrench

This double-ended wrench is suitable for working on 15mm (1/2in) and 22mm (3/4in) fittings. Ideal for use in awkward places such as backnuts fitted to taps behind sinks or baths.



FA15W1
£7.11 Ex VAT
£8.53 Inc VAT

Tap Backnut Spanner

This double ended box spanner is used for the removal or fitting of brass and nylon tap backnuts on basins. Supplied complete with a Tommy bar.



Fits **1/2in & 3/4in** backnuts

Sizes:
27mm and 32mm

FA15PBOX2732
£5.84 Ex VAT
£7.01 Inc VAT

Monobloc Tap Spanners

A three piece spanner set specifically designed for use on monobloc tap backnuts.



FA15PBOXSET3
£6.20 Ex VAT
£7.44 Inc VAT

Set contains:
• 8mm & 9mm
• 10mm & 11mm
• 12mm & 13mm
• Tommy bar

Box Spanners

A six piece set of double ended box spanners complete with tommy bar, bright plated for corrosion resistance. The set includes the twelve most popular sizes which are ideal for use by both tradesmen and home users. These spanners are particularly suitable for automotive repair jobs and plumbing maintenance work and include most of the commonly used spanners for plumbing backnut applications.



FA15PBOXSET6
£8.56 Ex VAT £10.27 Inc VAT

Set contains
Box Spanners:
• 8mm & 9mm
• 10mm & 11mm
• 12mm & 13mm
• 14mm & 15mm
• 16mm & 17mm
• 18mm & 19mm
• Tommy Bar

6 PIECE SET