

## Plasterers Trowel

### Carbon Steel Blade

Plasterers finishing trowel with a high quality polished and ground flexible carbon steel blade, fitted with a comfortable banana shaped handle of hardwearing plastic.



**Size:**  
280 x 120mm  
(11 x 4<sup>3</sup>/<sub>4</sub>in)

FAITP11P  
£5.90 Ex VAT  
£7.08 Inc VAT

### Stainless Steel Blade

High quality plasterers finishing trowels. The blades are manufactured from stainless steel and are suitable for use with all types of plaster. Bi-material soft-grip handles.

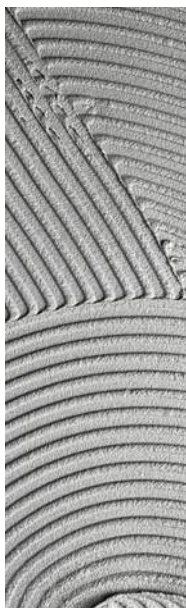


**Size:**  
280 x 120mm  
(11 x 4<sup>3</sup>/<sub>4</sub>in)

FAISGTP11SS  
£10.56 Ex VAT  
£12.67 Inc VAT

**Size:**  
325 x 125mm  
(13 x 5in)

FAISGTP13SS  
£18.50 Ex VAT  
£22.20 Inc VAT



## Notched Trowels

### Carbon Steel Blade

V-notched mastic trowel specifically designed for the application of adhesive prior to the setting of laminates and vinyl floor coverings.



3mm  
V-notched blade

**Size:**  
280 x 115mm  
(11 x 4<sup>1</sup>/<sub>2</sub>in)

FAISGTNOT3  
£7.23 Ex VAT £8.68 Inc VAT

### Stainless Steel Blades

Specifically designed for the application of adhesive prior to the setting of wall or floor tiles. High quality stainless steel blade for durability and a long working life. These trowels feature two notched blade edges for applying wall tile adhesive and two straight edges for finishing and cutting off.

**Walling**  
6mm Notch



**Size:**  
280 x 115mm  
(11 x 4<sup>1</sup>/<sub>2</sub>in)

FAISGTNOT6SS  
£9.00 Ex VAT £10.80 Inc VAT

**Flooring**  
10mm Notch



**Size:**  
330 x 115mm  
(13 x 4<sup>1</sup>/<sub>2</sub>in)

FAISGTNOT10S  
£10.99 Ex VAT £13.19 Inc VAT