

Tuck Pointer

Designed to help form weatherproof joints between bricks courses.



Width:
12mm (1/2in)

FAISGTUCK12
£4.43 Ex VAT
£5.32 Inc VAT



Trowel & Square

A handy tool that can be used for pointing or cementing in small scale brickwork.

12mm (1/2in)
FAITSQUIRE12
£7.09 Ex VAT
£8.51 Inc VAT

19mm (3/4in)
FAITSQUIRE19
£7.09 Ex VAT
£8.51 Inc VAT



Brick Jointer

An all steel double ended jointing tool with a 5/8in radius at one end and 1/2in radius at the other. Quickly and accurately produces a professional finish when 'Pointing Up' joints between brick courses.

FAIBJ1258
£6.04 Ex VAT
£7.25 Inc VAT

Width:
12mm & 16mm
(1/2in & 5/8in)



Harling Trowel

Designed to apply pebbles to mortar when pebble dashing. Pebbles are scooped onto the trowel and then thrown on the mortar.

Size:
165mm² (6 1/2in²)

FAISGTHARL
£7.08 Ex VAT
£8.50 Inc VAT



Brick Joint Raker

Used for the removal of old or loose mortar from brickwork pointing by using a robust pin which is adjustable to selected depths. The strong aluminium handle is fitted with hard wearing wheels.



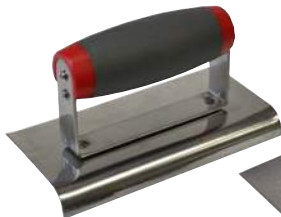
FAIBJR
£13.36 Ex VAT
£16.03 Inc VAT

Edging Trowels

Edging trowels are commonly use to provide a curved finish on steps and verges.

Stainless Steel blade

Carbon Steel blade



Size:
150 x 75mm
(6 x 3in)

FAISGTEDESS
£7.08 Ex VAT
£8.50 Inc VAT



Size:
280 x 120mm
(11 x 4 3/4in)

FAISGTEDE11
£12.47 Ex VAT
£14.96 Inc VAT

Soft-Grip Bucket Trowel

This trowel has a tapered blade that has been cut square and is designed for removing mortar from the sides and bottom of buckets.



Width Taper:
106-88mm (3 1/2-4 1/4in)
Length: 180mm (7in)

FAISGBUCKW
£6.48 Ex VAT £7.78 Inc VAT