

Knapsack Sprayer 16 Litres

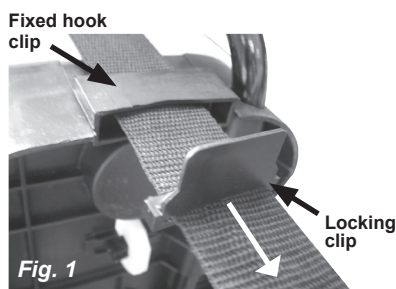
First Use Assembly

Unscrew the black filler cap and remove the additional service kit stored inside the sprayer's tank and place in a safe place for future use.

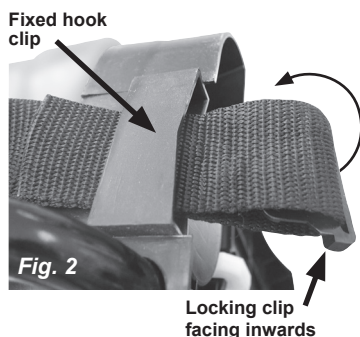
The sprayer will require the harness straps to be attached prior to first use. One quick release hook clip and two locking clips are supplied with the sprayer. One locking clip is used to fix the harness directly onto the tank base and the second is used to attach the harness to the quick release hook and allow adjustment of the strap length before attaching it to the tank.

Fixing the harness

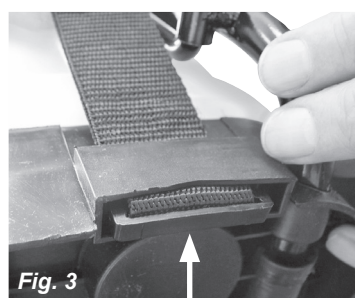
1. Attaching the fixed strap to the sprayer tank.



First pass the webbing strap through the fixed hook clip located on the side base of the tank, then through one of the locking clips (Fig.1).



Fold the webbing strap back over the locking clip and then thread the end back through the fixed hook clip (Fig 2).



Locking clip and webbing strap pulled together into the fixed hook clip

Hold the end of the strap and the webbing strap together and pull the locking clip up into the fixed hook clip. This will lock the strap in position. (Fig 3).

Repeat the procedure to attach the quick release clip to the other end of the webbing strap. The hook then clips to the bottom of the sprayer.



The fit of the harness can be adjusted to suit the user by releasing the locking clips on both straps and pulling the strap end up to shorten its length.



Please read these instructions carefully and retain for future reference.

This sprayer is designed for the application of water based domestic garden and agricultural chemicals, disinfectants and cleaning agents. Do not use to spray caustic or corrosive solutions or use with spirit based products as this may affect the pumps seals.

Operating Instructions

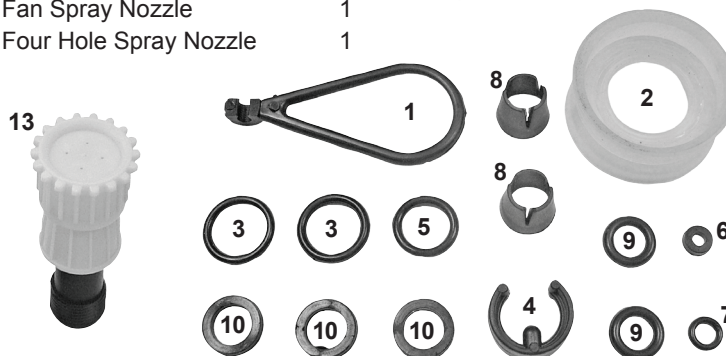
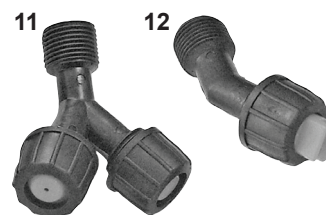
- 1 Before filling always check that the sprayer's shoulder straps are correctly fitted and adjusted so that the sprayer sits comfortably on your back.
- 2 Unscrew the large filler opening cap but do not remove the internal plastic filter.
- 3 Fill the sprayer to the desired level ensuring you do not exceed the maximum fill mark.
- 4 Replace the cap and screw down firmly.
- 5 Operate the pump handle 8 - 10 times to draw liquid into the pump pressure chamber and to provide the required working pressure.
- 6 To commence spraying depress the trigger handle until the desired flow rate is achieved. The trigger is fitted with a handy lock so that it may be locked in the on position for prolonged spraying operations.
- 7 Continue operating the pump handle using a steady motion to maintain pressure in the sprayer pump whilst spraying.

8 Spray nozzles may be adjusted by twisting until the required spray pattern is obtained (from a mist through to a coarse jet). Additional nozzles are supplied to provide different spray patterns, depending on the type of work being carried out. Do not undo nozzles too far as this will cause them to leak from the rear.

9 If the nozzle continues to drip after the trigger handle has been shut off, there is probably air in the discharge system (nozzle, handle, tap and hose). Purge the system by turning the nozzle to jet and operating the trigger on and off in short bursts, until the liquid shuts off cleanly. Collect any liquid in a separate container to use later.

Extra Spray Nozzles and Service Pack included:

	Qty
1. Operation Arm Fixed Ring	1
2. Bowl	1
3. O-Ring 15.5 x 2.5mm	2
4. Fixed Buckle	1
5. Handle Sealing Ring	1
6. Switch Sealing pad	1
7. Valve Core O-Ring	1
8. Split Sleeve	2
9. Spindle O-Ring	2
10. Spray Head Sealing Ring	3
11. 30 deg Twin Spray Nozzle	1
12. Fan Spray Nozzle	1
13. Four Hole Spray Nozzle	1



Looking After Your Sprayer

Blocked Nozzles

If a nozzle becomes blocked or fails to spray the correct pattern, unscrew the nozzle tip and clean the components under running water or a water jet. Do not use a metallic instrument to unblock a nozzle as this may alter the nozzle aperture making the nozzle ineffective.

Cleaning

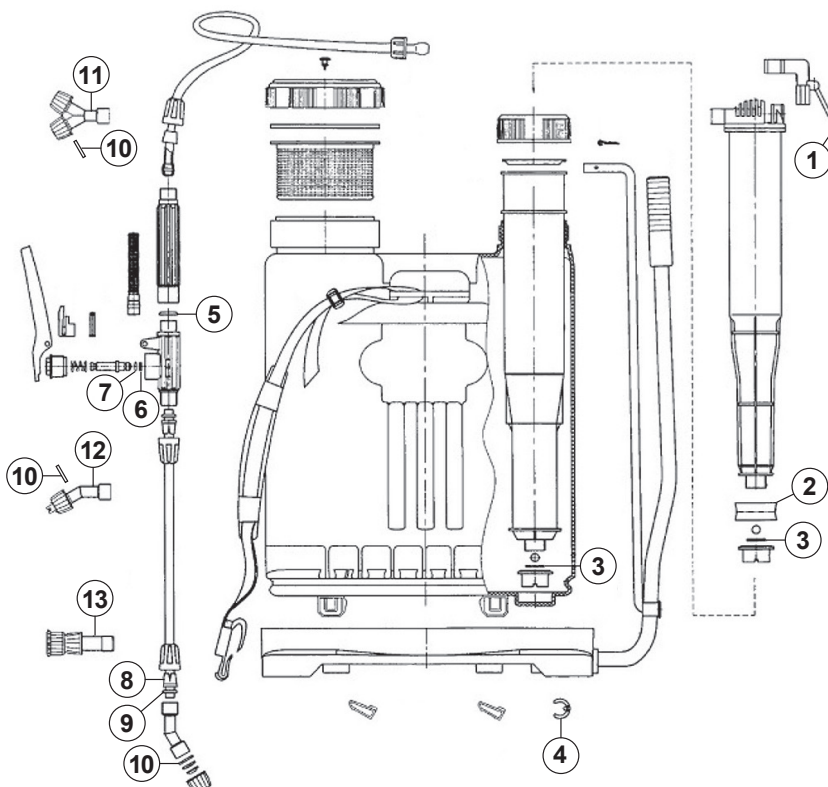
Add a little detergent and some warm water (not hot) to the sprayer and spray through the system. Repeat the above operation with clean cold water. Finally check that the nozzle is free from any residue. Your sprayer will now be perfectly clean and ready for its next use. Always dispose of any unused garden chemicals safely and in accordance with the manufactures instructions.

After Use

Always release the pressure from the pump cylinder before storage. Hold or lock the sprayers trigger in the on position until the pressure in the pump has been released.

Storage

Store the sprayer under cover and avoid freezing temperatures. For winter storage ensure that all fluid is removed from the tank, hose and lance before storing. Do not store in direct sunlight, in a greenhouse or any areas where extremes of heat may occur.



General Safety Tips

- When using garden pesticides, herbicides, insecticides, fungicides or any other form of garden chemical always obey the manufacturers instructions fully.
- Avoid contact with the skin and eyes, do not eat, drink or smoke when using the sprayer.
- Do not use garden sprayers for the application of flammable liquids.
- Wear the appropriate protective equipment coverall, gloves, goggles and suitable respiratory mask.
- Always direct the spray downwind as spraying into the wind will result in operator contamination.
- For details of a complete range of protective equipment that is suitable for use with garden chemicals visit the SCAN Safety Website at www.scan-safety.com



**ALWAYS WEAR
SUITABLE PROTECTION**

FAITHFULL TOOLS

Phoenix House,
3 White Lodge Business Estate,
Hall Road, Norwich, Norfolk, NR4 6DG

E-mail: enquiries@faithfulltools.com

www.fairthfulltools.com